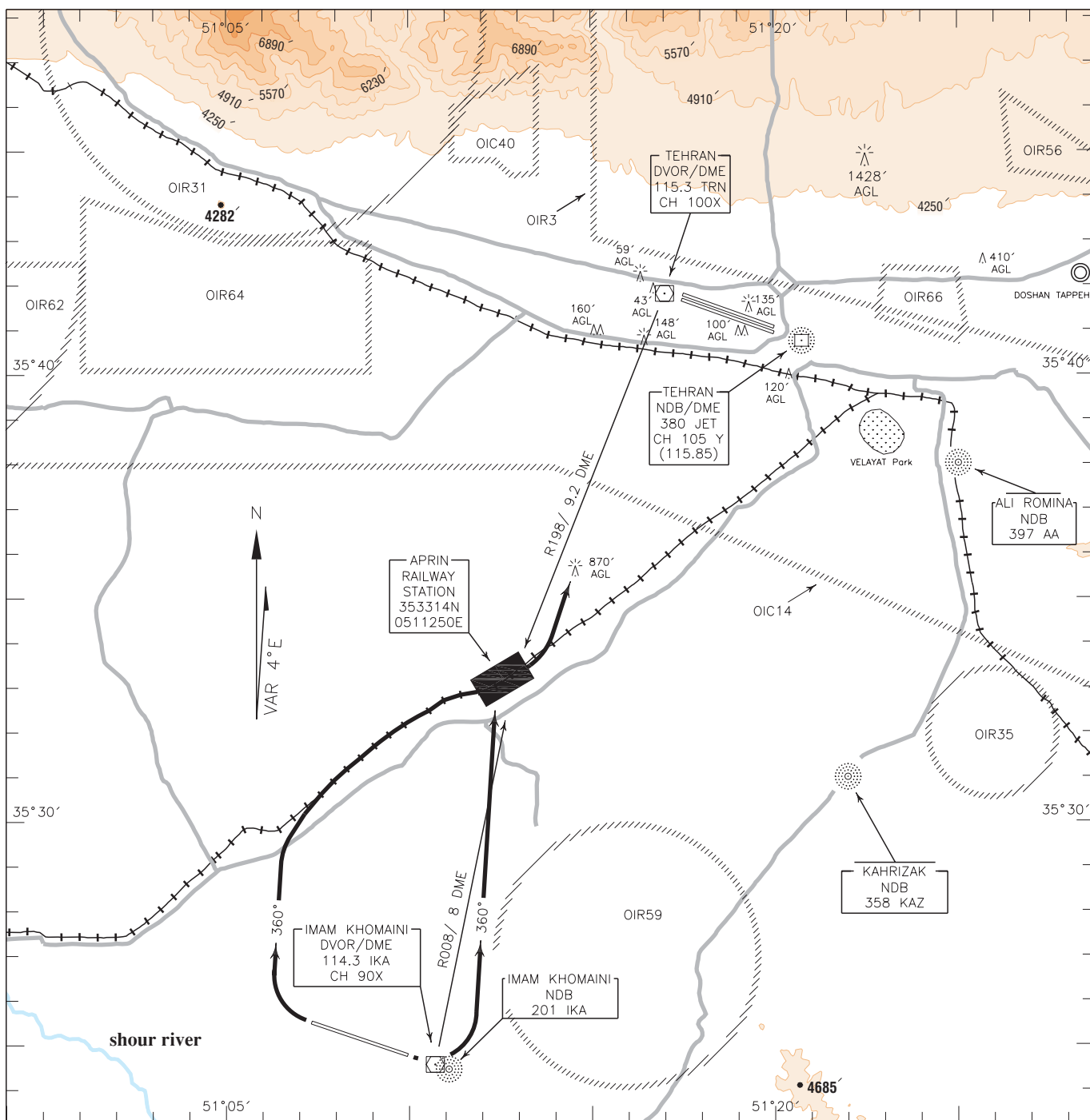


VFR CHART

AERODROME ELEV. 3305 FT
HEIGHTS RELATED TO
AERODROME ELEVATION

APP	119.700, 125.100
RADAR	119.700, 125.100
TWR	118.700
GND	121.600
ATIS	127.200

TEHRAN/IMAM KHOMAINI
APRIN C/D
RWY 29/11



APRIN C DEP: RWY 29 – After take off turn right proceed on TR 360° to follow south west main railway, maintain 5000 FT or below (higher level by APP if required) to point APRIN, then contact Mehrabad tower on 118.1 MHz to obtain approval to join traffic pattern.

APRIN D DEP: RWY 11 – After take off turn left proceed on TR 360° to follow south west main railway, maintain 5000 FT or below (higher level by APP if required) to point APRIN, then contact Mehrabad tower on 118.1 MHz to obtain approval to join traffic pattern.

NOTE:

Contour intervals are to be selected at 660 FT (200 M).



SCALE 1:250000